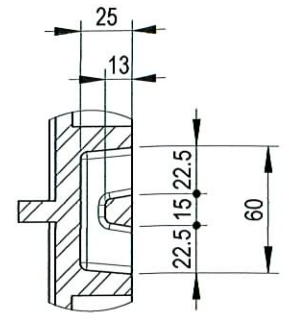
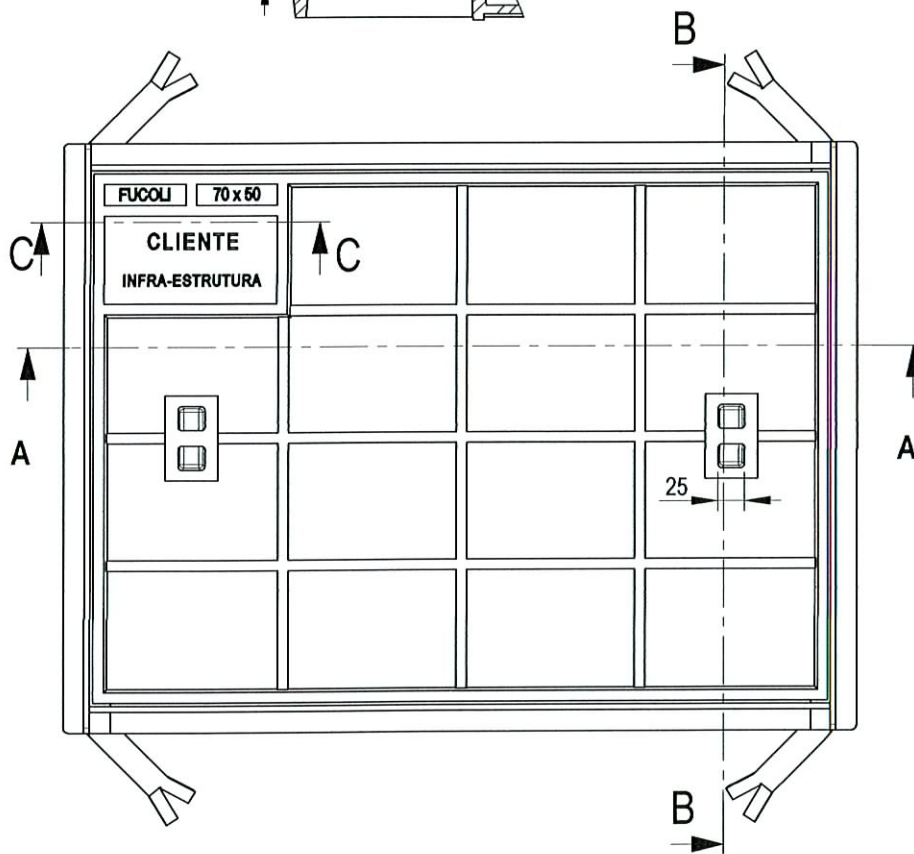
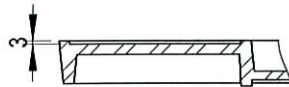


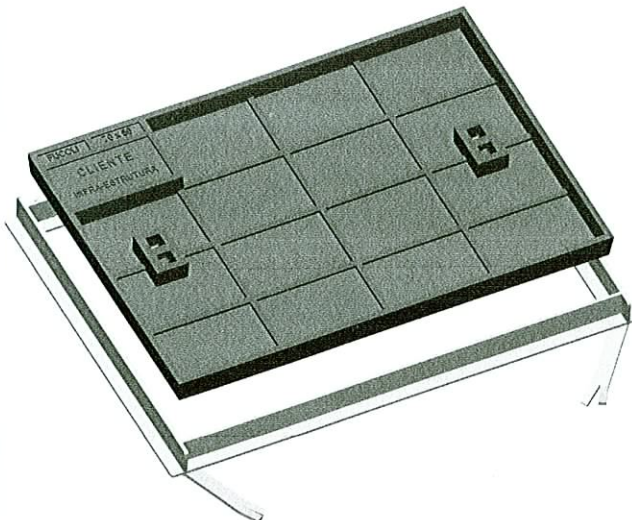
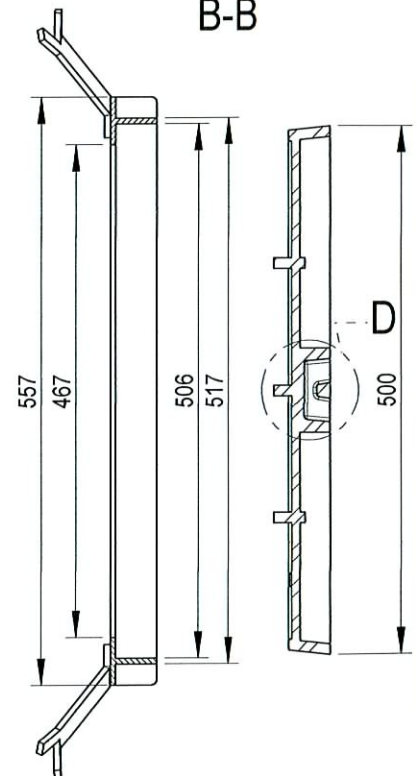
Pormenor - D



C-C



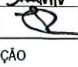


B-B



TAMPA **33,0** Kg (cód. 204.25.041)
 PESO APROX.
 ARO **9,2** Kg (cód. 204.25.042)

NOTA: ÂNGULOS DE SAÍDA +3°

DESENHOU	DATA	RÚBRICA	MATERIAL	 Fucoli - Somepal <small>FUNDIÇÃO DE FERRO S.A.</small>
DESENHOU	19/10/2012		TAMPA - FERRO FUNDIDO NODULAR (DÚCTIL)	
APROVOU	19/10/2012		ARO - AÇO ZINCADO	
ESCALA	DESIGNAÇÃO			DESENHO Nº
-	TAMPA+ARO RECT. REB. 700x500 N			204.25.040
TOLER. ISO 8062 CT 9				REV. Nº 1 FOLHA 1 DE 1
				SUBSTITUI REV. 0
				SUBSTITUIDO POR