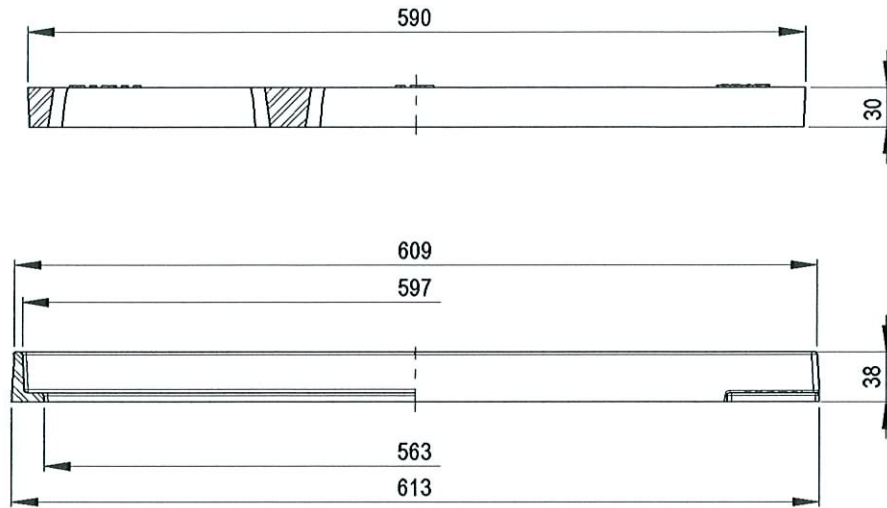
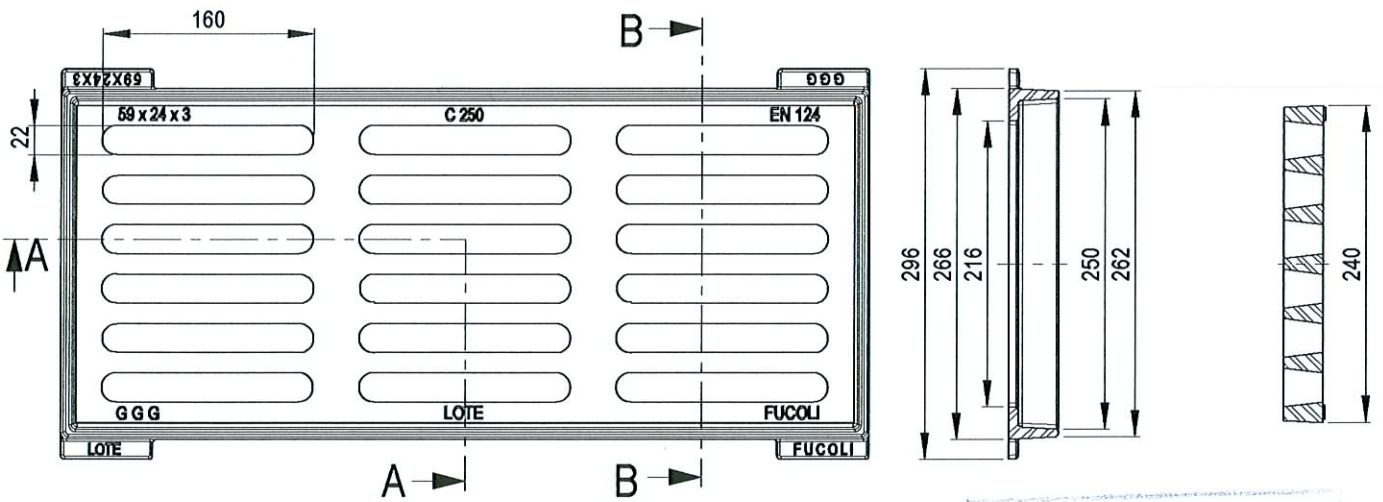


A-A



B-B

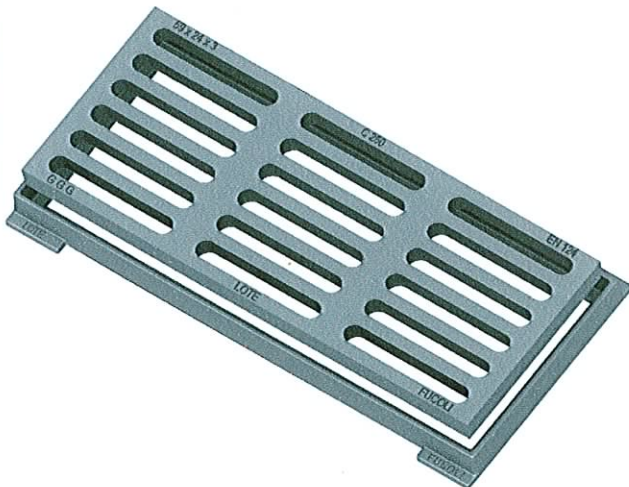


CÓPIA N.º 2


GRELHA **14,3** Kg (cód. 203.06.044)

PESO APROX.

ARO **5,3** Kg (cód. 203.09.112)



NOTA: ÂNGULOS DE SAÍDA +3°

DESENHOU	DATA	RÚBRICA	MATERIAL:	 Fucoli - Somepal <small>FABRICAÇÃO DE FERRO, S.A.</small>
APROVOU	25/05/2007	<i>[Signature]</i>	FERRO FUNDIDO NODULAR (DÚCTIL)	
ESCALA	DESIGNAÇÃO			DESENHO Nº
-	GRELHA+ARO 59x24x3 C250 N			203.03.034
TOLER.	ISO	8062	CT 9	REV. Nº 3
				FOLHA 1 DE 1
				SUBSTITUI REV. 2
				SUBSTITUIDO POR