

FLANGED SOFT SEALING GATE VALVE ISO TOP FLANGE S14 3000

prepared for electric actuator
DN 40 - 600 PN10/16

01.102



Product description

- Flanged soft sealing gate valve with ISO top flange prepared for electrical actuator series 3000 for drinking water and neutral liquids
- Service temperature from 0°C (excluding frost) to 70°C

Standards

- Designed according to EN 1074 part 1 & 2 and EN 1171
- Flange drilling to EN 1092-2 PN10/16
- Face-to-face according to EN 558 series 14
- ISO top flange according to ISO 5210

Tests

All valves are individually hydrostatically tested according to EN 1074-1/2 and EN 12266:

- Seal 1.1 x PN (in bar); Body: 1.5 x PN (in bar). Operation torque test

Corrosion protection

- Epoxy powder coating RAL 5005
- Applied internal and external with a minimum coating thickness of 250 µm
- Potable water approved epoxy coating, fusion bonded according DIN 3476-1, EN 14901 and GSK approved

Approvals

- ACS Potability Certificate 15 ACC NY 005
- GSK Epoxy Coating Certificate GSK-ID:1247 (RAL-GZ 662)

Features

- Isolation valve approved for drinking water
- Full bore
- Low operating torque
- The valves from DN 250 to DN 300 are equipped with an axial bearing, from DN 350 to DN 600 are equipped with two thrust bearings to ensure reduced operating torque
- Stainless steel stem with rolled threads produced by cold rolling process, which keeps the steel structure and increase its mechanical resistance
- Stem sealing system with 4 O-rings in EPDM
- O-ring stem sealing exchangeable under pressure
- Wedge fully vulcanized with drinking water approved EPDM
- Top of the wedge conceived with “soft stop” system, which acts as an end stop for the fully open valve
- Wedge with brass nut fixed in the wedge core preventing vibration and ensure a long life span
- Wedge and body designed with “monorail” system
- Round EPDM bonnet gasket fixed in a recess, surrounding the bolts, ensuring a perfect seal
- Body/bonnet bolts in stainless steel A2 encased and sealed ensuring full corrosion protection
- ISO top flange according ISO 5210 for electric actuator or manual gearbox assembling
- Accessories: electric actuator and bevel gearbox
- On request possibility of stem in stainless steel AISI 316L, NBR sealings and wedge nut in different brass grades.



Fucoli Somepal
FUNDAÇÃO DE FERRO, S. A.

Visit our website at www.fucoli-somepal.pt

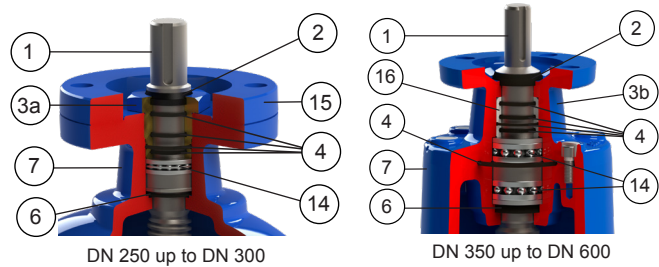
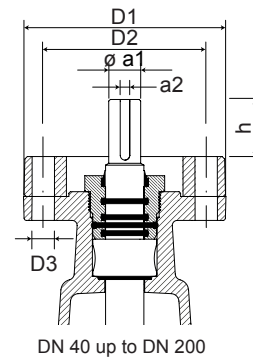
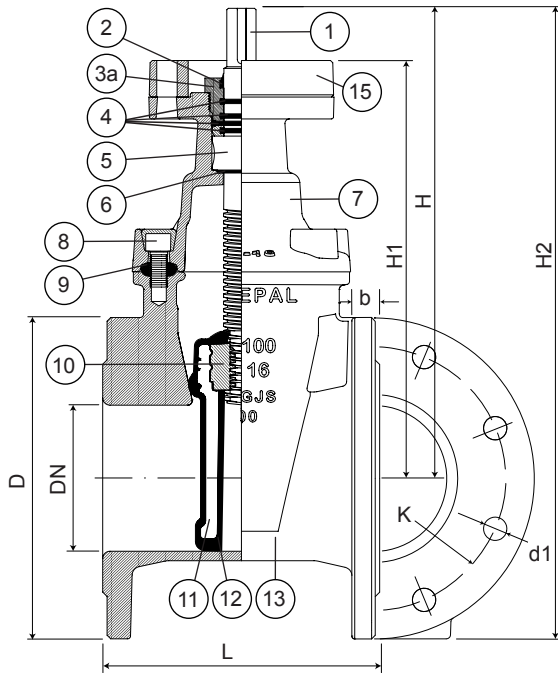
Head office: Estrada de Coselhas, 3000-125 Coimbra – Portugal | Tel.: (+351) 239 490100 | Fax: (+351) 239 490198

Branch office: Rua de Aveiro 50, 3050-420 Pampilhosa – Portugal | Tel.: (+351) 239 490100 | Fax: (+351) 231 949292 | comercial@fucoli-somepal.pt

FLANGED SOFT SEALING GATE VALVE ISO TOP FLANGE S14 3000

prepared for electric actuator
DN 40 - 600 PN10/16

01.102



Component list

pos.	components	material	standard
1	Stem	Stainless steel AISI 420	EN 10088 - 1
2	Clearing joint	Elastomer	
3a	Gland	Brass DZR CW602N	EN 12164
3b	Gland	Ductile iron EN-GJS-500-7	EN 1563
4	O-rings	Elastomer EPDM	EN 681 - 1
5	Stem washer	Brass DZR CW602N	EN 12164
6	O-ring	Elastomer EPDM	EN 681 - 1
7	Bonnet	Ductile iron EN-GJS-500-7	EN 1563
8	Bolts	Stainless steel A2	EN 10088 - 1

pos.	components	material	standard
9	Bonnet gasket	Elastomer EPDM	EN 681 -1
10	Wedge nut	Brass DZR CW626N	EN 12164
11	Wedge	Ductile iron EN-GJS-500-7	EN 1563
12	Wedge covering	Elastomer EPDM	EN 681 -1
13	Body	Ductile iron EN-GJS-500-7	EN 1563
14	Bearing	Steel	ISO 20516
15	Mouting flange	Ductile iron EN-GJS-500-7	EN 1563
16	Gland bush	POM	

Reference and dimensions

DN	PN	code	D	L	H	H1	H2	K	n° x d1	b	ISO 5210	D1	D2	n° x D3	ø a1	a2	h	turns to open	Kg approx.
			mm	mm	mm	mm	mm	mm	mm	mm	flange	mm	mm	mm	mm	mm	mm		
40	10/16	10727500	150	140	207	177	282	110	4 x 19	19	F10	125	102	4 x 12	20	6	30	10	10
50	10/16	10727510	165	150	238	208	321	125	4 x 19	19	F10	125	102	4 x 12	20	6	30	13	12
60	10/16	10727520	175	170	250	217	338	135	4 x 19	19	F10	125	102	4 x 12	20	6	33	13	14
65	10/16	10727530	185	170	250	217	343	145	4 x 19	19	F10	125	102	4 x 12	20	6	33	13	18
80	10/16	10727540	200	180	286	253	386	160	8 x 19	19	F10	125	102	4 x 12	20	6	33	16	19
100	10/16	10727550	220	190	325	286	435	180	8 x 19	19	F10	125	102	4 x 12	20	6	39	20	23
125	10/16	10727560	250	200	362	323	487	210	8 x 19	19	F10	125	102	4 x 12	20	6	39	25	28
150	10/16	10727570	285	210	425	384	568	240	8 x 23	19	F10	125	102	4 x 12	20	6	41	30	36
200	10	10727580	340	230	505	459	683	295	8 x 23	20	F10	125	102	4 x 12	20	6	46	34	53
200	16	10727585	340	230	505	459	683	295	12 x 23	20	F10	125	102	4 x 12	20	6	46	34	53
250	10	10727590	400	250	595	545	805	350	12 x 23	22	F14	175	140	4 x 18	30	8	50	42	77
250	16	10727595	400	250	595	545	805	355	12 x 28	22	F14	175	140	4 x 18	30	8	50	42	77
300	10	10727600	455	270	670	620	898	400	12 x 23	24.5	F14	175	140	4 x 18	30	8	50	50	107
300	16	10727605	455	270	670	620	898	410	12 x 28	24.5	F14	175	140	4 x 18	30	8	50	50	110
350	10	10727610	505	290	940	875	1193	460	16 x 23	24.5	F14	175	140	4 x 18	30	8	65	67	220
350	16	10727615	520	290	940	875	1200	470	16 x 28	26.5	F14	175	140	4 x 18	30	8	65	67	224
400	10	10727620	565	310	940	875	1223	515	16 x 28	24.5	F14	175	140	4 x 18	30	8	65	67	238
400	16	10727625	580	310	940	875	1230	525	16 x 31	28	F14	175	140	4 x 18	30	8	65	67	244

continued on next page

All the drawing, technical data, dimensions and weights are not binding. Subject to change. The components may be replaced by equivalent or higher materials without prior notice.

Ed.8 Rev.7 2/3

FLANGED SOFT SEALING GATE VALVE ISO TOP FLANGE S14 3000
 prepared for electric actuator
DN 40 - 600 PN10/16

01.102



continued from previous page

DN	PN	code	D mm	L mm	H mm	H1 mm	H2 mm	K mm	n° x d1 mm	b mm	ISO 5210 flange	D1 mm	D2 mm	n° x D3 mm	ø a1 mm	a2 mm	h mm	turns to open	Kg approx.
450	10	10727630	615	330	1120	1055	1428	565	20 x 28	25.5	F14	175	140	4 x 18	30	8	65	71	388
450	16	10727635	640	330	1120	1055	1440	585	20 x 31	30	F14	175	140	4 x 18	30	8	65	71	396
500	10	10727640	670	350	1120	1055	1455	620	20 x 28	26.5	F14	175	140	4 x 18	30	8	65	71	412
500	16	10727645	715	350	1120	1055	1478	650	20 x 34	31.5	F14	175	140	4 x 18	30	8	65	71	429
600	10	10727650	780	390	1370	1290	1680	725	20 x 31	30	F16	210	165	4 x 22	40	12	80	86	-
600	16	10727655	840	390	1370	1290	1710	770	20 x 37	36	F16	210	165	4 x 22	40	12	80	86	-



Fucoli Somepal
 FUNDIÇÃO DE FERRO, S.A.

Visit our website at www.fucoli-somepal.pt

Head office: Estrada de Coselhas, 3000-125 Coimbra – Portugal | Tel.: (+351) 239 490100 | Fax: (+351) 239 490198

Branch office: Rua de Aveiro 50, 3050-420 Pampilhosa – Portugal | Tel.: (+351) 239 490100 | Fax: (+351) 231 949292 | comercial@fucoli-somepal.pt

